

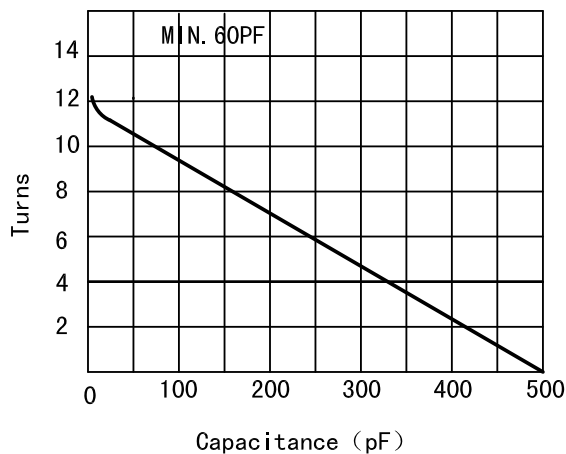
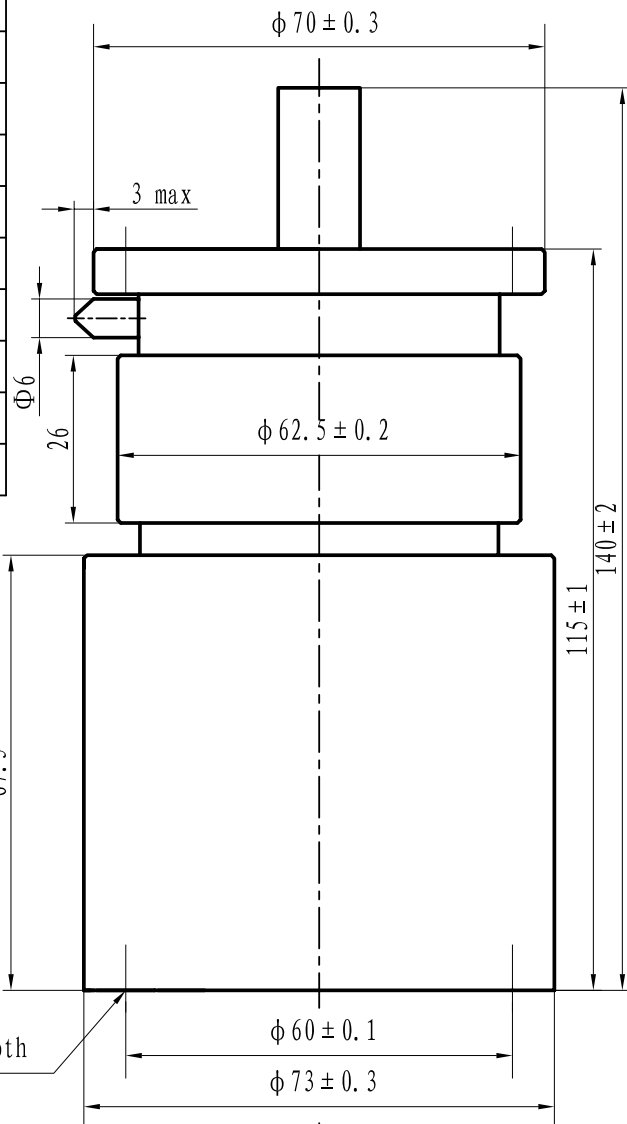


# Data-Sheet-Variable Vacuum Capacitor CKTB500/15/90



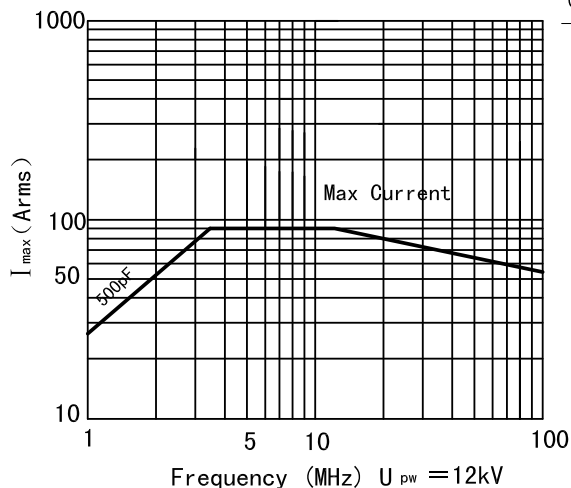
www.glvac.cn

Specification	
Capacity $C_{max}$ (nominal)	500pF
Capacity $C_{min}$ (nominal)	50pF
Voltage (Peak Test $U_{pt}$ /Peak Working $U_{pw}$ )	20kV/12kV
Capacity tolerance (liner Range)	10%
Max. Current $I_{max}$ at 13.56MHz with	90Arms
Convection Cooling	
Capacitance per turn	42pF/turn
Torque	$\leq 0.2Nm$
Net Weight	1.5kg



6 × M5-4 in depth

$I_{max}$  at ambient and 125 °C surface temp. for convection cooling



6 × M5-4 in depth

